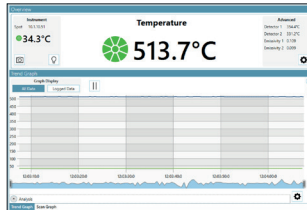


SPOT VIEWER & SPOT PRO

SOFTWARE FOR THE
SPOT RANGE OF PYROMETERS



① R100, R100F, R160, R160F, R210, M100, M100F, M160, M160F, M210
AND APPLICATION SPECIFIC



LAND
AMETEK[®]
PROCESS & ANALYTICAL INSTRUMENTS

OneTemp[®] pty ltd
measure | control | record



QUALITY CUSTOMER SOLUTIONS

SPOTVIEWER & SPOTPRO

AMETEK LAND HAS BEEN MANUFACTURING PRECISION MEASURING EQUIPMENT SINCE 1947.

WE ARE SPECIALISTS IN NON-CONTACT TEMPERATURE MEASUREMENT AND COMBUSTION MONITORING WITH APPLICATIONS ACROSS DIVERSE INDUSTRIES SUCH AS STEEL AND GLASS MAKING, POWER GENERATION AND CEMENT MANUFACTURE.

As part of AMETEK Process & Analytical Instruments Division since 2006, our customers benefit from the worldwide AMETEK sales and service team.

SPOTViewer is a PC-based utility that enables you to connect, configure, and view data from a SPOT pyrometer and scan graphs with an Actuator. Specifically developed to work seamlessly with the latest generation of industry leading single point pyrometers. SPOTViewer's simple installation means the operator can quickly connect, configure and view data from any AMETEK Land SPOT pyrometer.

- DATA LOGGING
- ALARM VISUALIZATION
- DATA TRENDING/ANALYSIS
- SETTING MANAGEMENT

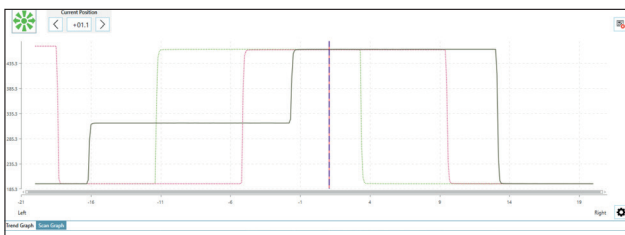
Easy view and analysis of long term data displayed in both graphical and tabular views. Clearly highlights trends and patterns allowing you a greater understanding of the temperatures involved in your process.

Simple configuration of pyrometer and actuator settings from a remote location gives you total control over temperature measurement on their process without the need to be at the instrument location.

SPOTViewer enables a user to remotely control a SPOT Actuator and its settings, plus display scan graphs.

SCAN GRAPH VIEW

- Trigger an Actuator scan directly from within the SPOTViewer.
- Control the Actuator position using the buttons or by clicking on the graph.
- See the temperature readings of up to 6 previous Actuator scans.
- View the current Actuator position and the last detected hot spot on the graph.



TREND VIEW

Provides a view of live and logged temperature trend data in as fast as 1 ms (model dependent). A cursor provides detailed information about each data point.

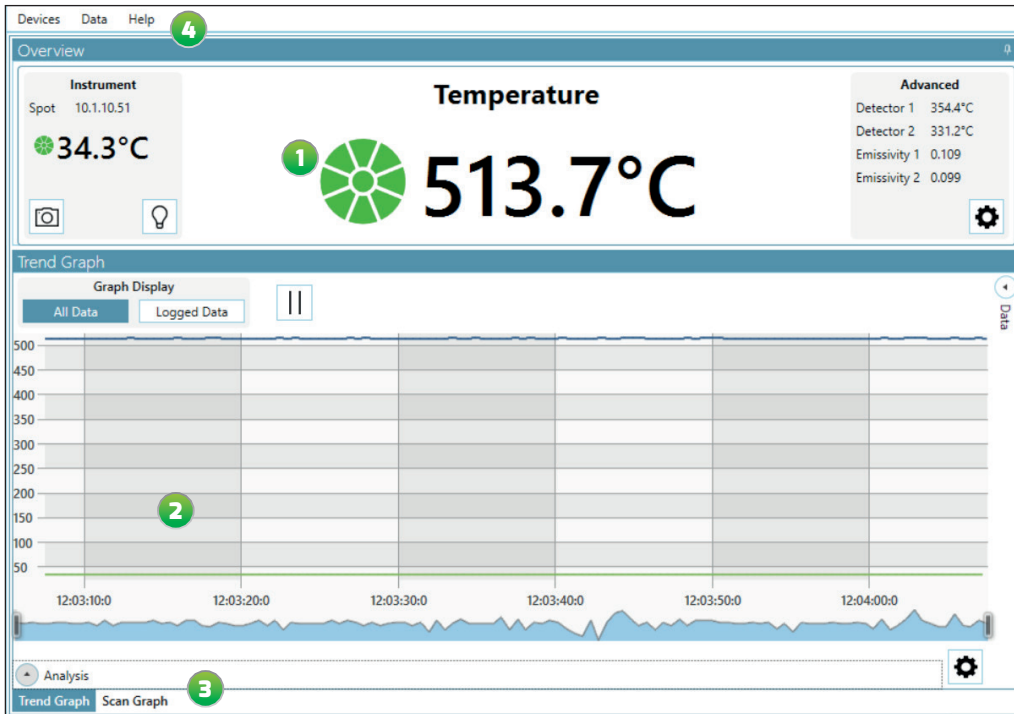
- **All Data Mode:** Displays a trend of all temperature data from the instrument. Pause the graph display to further analyse the visible data by panning and zooming.
- **Logged Data Mode:** This mode allows the user to view the data currently being logged to file. Pause the display to view historically logged data by selecting the date range to analyse.



- **Trend Analysis:** For each temperature trend in the view, statistical analysis is performed to calculate the minimum, average, maximum value, and rate of change.

WHAT IS SPOT VIEWER?

There are four key features of the SPOTViewer interface.



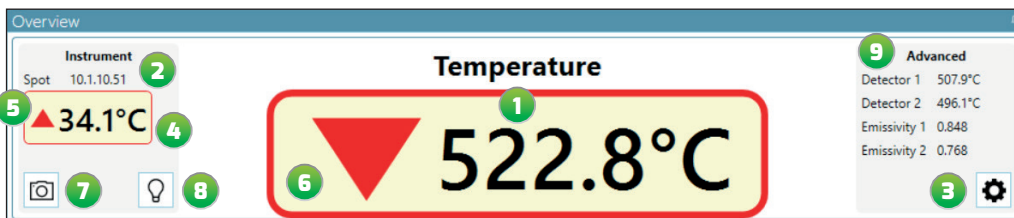
1: THE INSTRUMENT OVERVIEW shows the current temperature reading from the pyrometer. Increase the size of the view to show temperatures in a larger font size. This view allows you to take a snapshot image of the target being viewed by the pyrometer.

2: THE TREND VIEW gives a graphical trace of temperature readings, also in date/time order. View logged data in a grid view by expanding the data tab.

3: THE SCAN GRAPH shows the temperature profile read during the last scan using an Actuator.

4: THE MENU BAR provides access to additional options such as data logging and file storage settings, help and language selection.

INSTRUMENT OVERVIEW



1: TARGET TEMPERATURE DISPLAY
Live temperature display.

2: IP ADDRESS
Displays the instrument's IP address.

3: DISPLAY SETTING BUTTON
Changes the display settings for this view, allowing you to alter what's displayed on screen.

4: INSTRUMENT TEMPERATURE DISPLAY
Indicates the sensor's own ambient temperature.

5: INSTRUMENT TEMPERATURE ALARM STATUS
The state of the instrument temperature alarm is indicated by the frame around the temperature turning red and either an upward (exceeds maximum) or downward (below minimum) arrow.

6: TARGET TEMPERATURE ALARM STATUS
The state of the user settable target temperature alarm is indicated by the large arrow, pointing either upward (above set point) or downward (below set point).

7: IMAGE CAPTURE BUTTON
When pressed, will capture and display a JPG image from the pyrometer viewfinder (lensed models only).

8: SPOT LED BUTTON
Turn on and off the LED of the SPOT device.

9: ADVANCED DISPLAY
Current detector readings and emissivity output from supported SPOT devices.

SPOTVIEWER & SPOTPRO

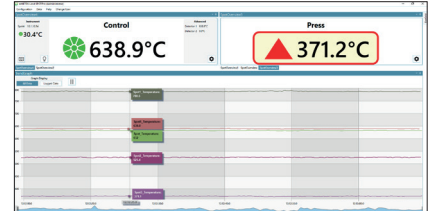
SOFTWARE FOR THE SPOT RANGE OF PYROMETERS

WHAT IS SPOTPRO?

SPOTPro, an advanced software utility, provides a single control point to configure, store and view data for up to 40 SPOT infrared pyrometers.

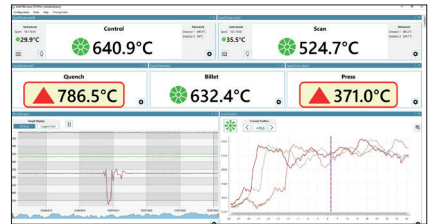
CONTROL MULTIPLE SPOT PYROMETERS

Giving a complete overview of all the SPOT pyrometers connected to your network, SPOTPro allows you to independently configure data logging for each thermometer, by setting automatic triggers for data storage. This allows customised criteria to be set for data measurements during important events.



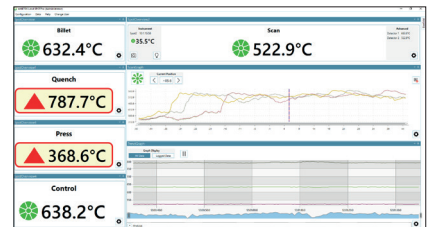
RICHER DATA ANALYSIS

SPOTPro allows users to compare live and historical data to trend and diagnose process issues. Switching between live and historical data enables a comprehensive review and analysis of your measurements. Data can be logged to a SQLite database for easy configuration or an MS SQL Server database for enterprise-level data requirements. All data can be exported to CSV or XML for integration into other processes or further processing in applications such as MS Excel.



FLEXIBLE USER INTERFACE

SPOTPro supports a flexible window layout with multiple monitor support - see all the data that is most important to you prominently on screen at once.



AMECARE

PERFORMANCE SERVICES
AMETEK Land's AMECare Performance Services ensure peak performance and maximum return on investment over the life of your equipment.

We will deliver this by:

- Proactively maintaining your equipment to maximize availability.
- Optimizing solutions to meet your unique applications.
- Enhancing user skills by providing access to product and application experts.

AMETEK Land's global service network provides unparalleled after-sales services to ensure you get the best performance and value from your AMETEK Land products. Our dedicated service centre teams and on-site engineers are trained to deliver the highest standard of commissioning, maintenance and after-sales support.

SEE OUR OTHER RELATED LITERATURE:



SPOT FAMILY OF PYROMETERS



SPOT MOUNTINGS & ACCESSORIES

DISCOVER HOW OUR BROAD RANGE OF NON-CONTACT TEMPERATURE MEASUREMENT AND COMBUSTION & EMISSIONS PRODUCTS OFFER A SOLUTION FOR YOUR PROCESS

WWW.AMETEK-LAND.COM

LAND
AMETEK
www.ametek-land.com
land.enquiry@ametech.com

OneTemp^{pty ltd}
measure | control | record
1300 768 887
www.onetemp.com.au

For a full list of international offices, please visit our website www.ametek-land.com

Copyright © 2008-19 LAND Instruments International.
Continuous product development may make it necessary to change these details without notice.

MARCOM0374 SPOTViewer & SPOTPro Rev 5